



Product Service

CERTIFICATE

No. Z2 16 07 10254 008

Holder of Certificate: Berleburger Schaumstoffwerk GmbH

Am Hilgenacker 24
57319 Bad Berleburg
GERMANY



Certification Mark:



Product:

**Fall protection slabs
Safety tile type REGUPOL® FX**

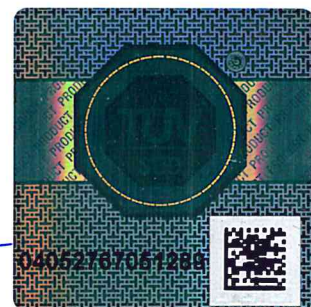
The product was tested on a voluntary basis and complies with the essential requirements. The certification mark shown above can be affixed on the product. It is not permitted to alter the certification mark in any way. In addition the certification holder must not transfer the certificate to third parties. See also notes overleaf.

Test report no.: 713075784

Valid until: 2021-07-11

Date, 2016-08-03

(Stephan Vanderheyden)



Page 1 of 2



CERTIFICATE
No. Z2 16 07 10254 008

Model(s):

Regupol® FX 30
Regupol® FX 35 "G"
Regupol® FX 40
Regupol® FX 50
Regupol® FX 50 "G"
Regupol® FX 70 "G"
Regupol® FX 75
Regupol® FX 90
Regupol® FX 100
Regupol® FX 110
with and without EPDM top layer

Parameters:

type: tile made of permanent elastic rubber, two-layer
 FX 30 and "G" variant one-layer
 binder: Polyurethan
 size: 1000 x 500 mm

model	material thickness	tile weight per m ²	maximum fall height
- without EPDM top layer -			
FX 30	30 mm	23,9 kg	1,00 m
FX 40	40 mm	24,0 kg	1,30 m
FX 50	50 mm	29,3 kg	1,50 m
FX 75	75 mm	39,3 kg	2,20 m
FX 90	90 mm	46,5 kg	2,50 m
FX 100	100 mm	50,4 kg	2,80 m
FX 110	110 mm	57,0 kg	3,00 m
- with EPDM top layer			
FX 40	40 mm	29,0 kg	1,20 m
FX 50	50 mm	30,8 kg	1,50 m
FX 75	75 mm	43,3 kg	2,10 m
FX 100	100 mm	53,6 kg	2,80 m
FX 110	110 mm	59,2 kg	3,00 m
- "G"-variant			
FX 35 "G"	35 mm	30,0 kg	1,00 m
FX 50 "G"	50 mm	33,6 kg	1,50 m
FX 70 "G"	70 mm	45,8 kg	2,00 m

Tested according to:

DIN EN 1177:2008
 EN 1177:2008

Production Facility(ies):

43232